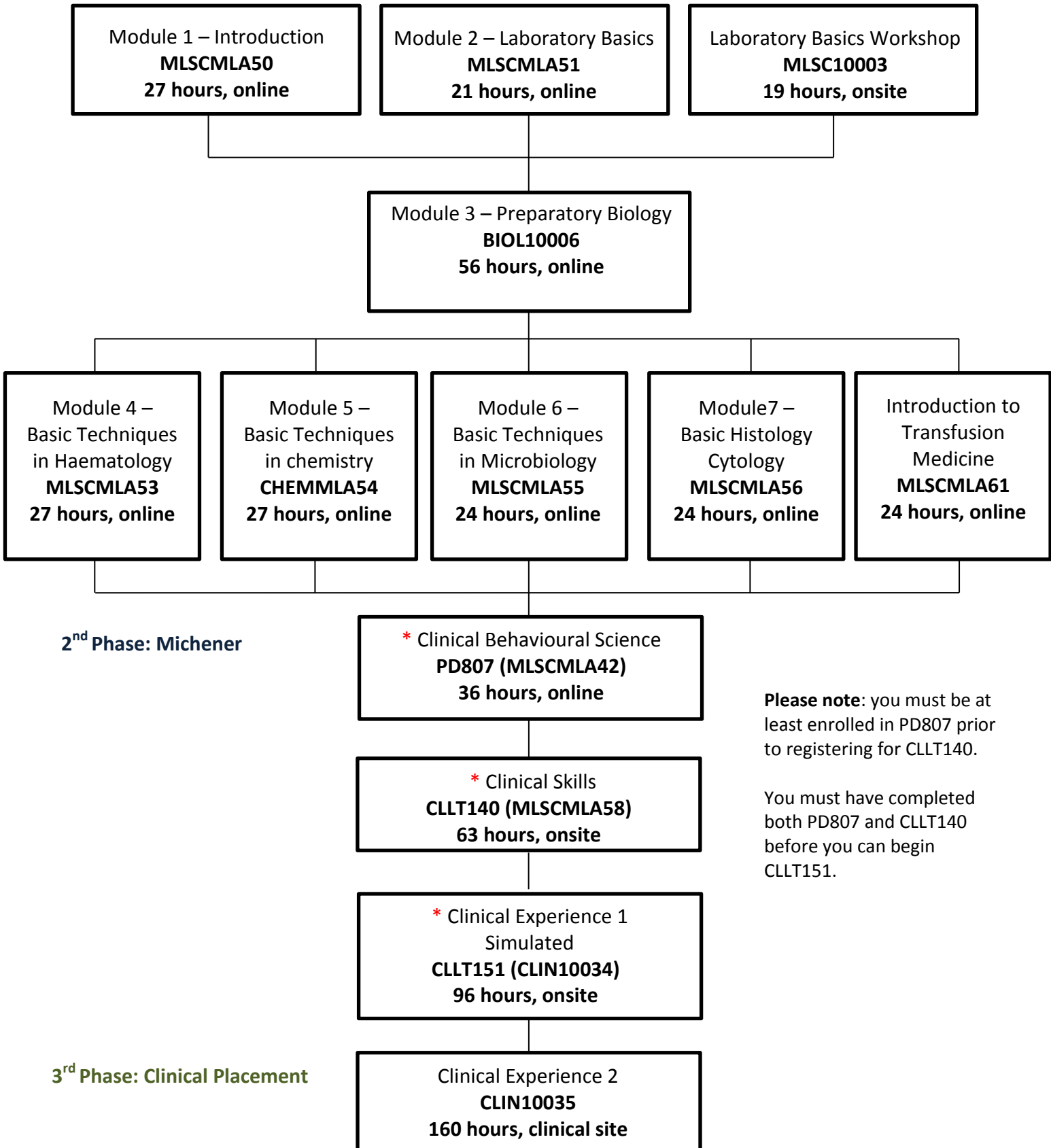


## Program Structure – Medical Laboratory Technician (Mohawk/Michener)

### 1<sup>st</sup> Phase: Mohawk

*\*= Michener Institute courses*



**Please note:** you must be at least enrolled in PD807 prior to registering for CLLT140.

You must have completed both PD807 and CLLT140 before you can begin CLLT151.